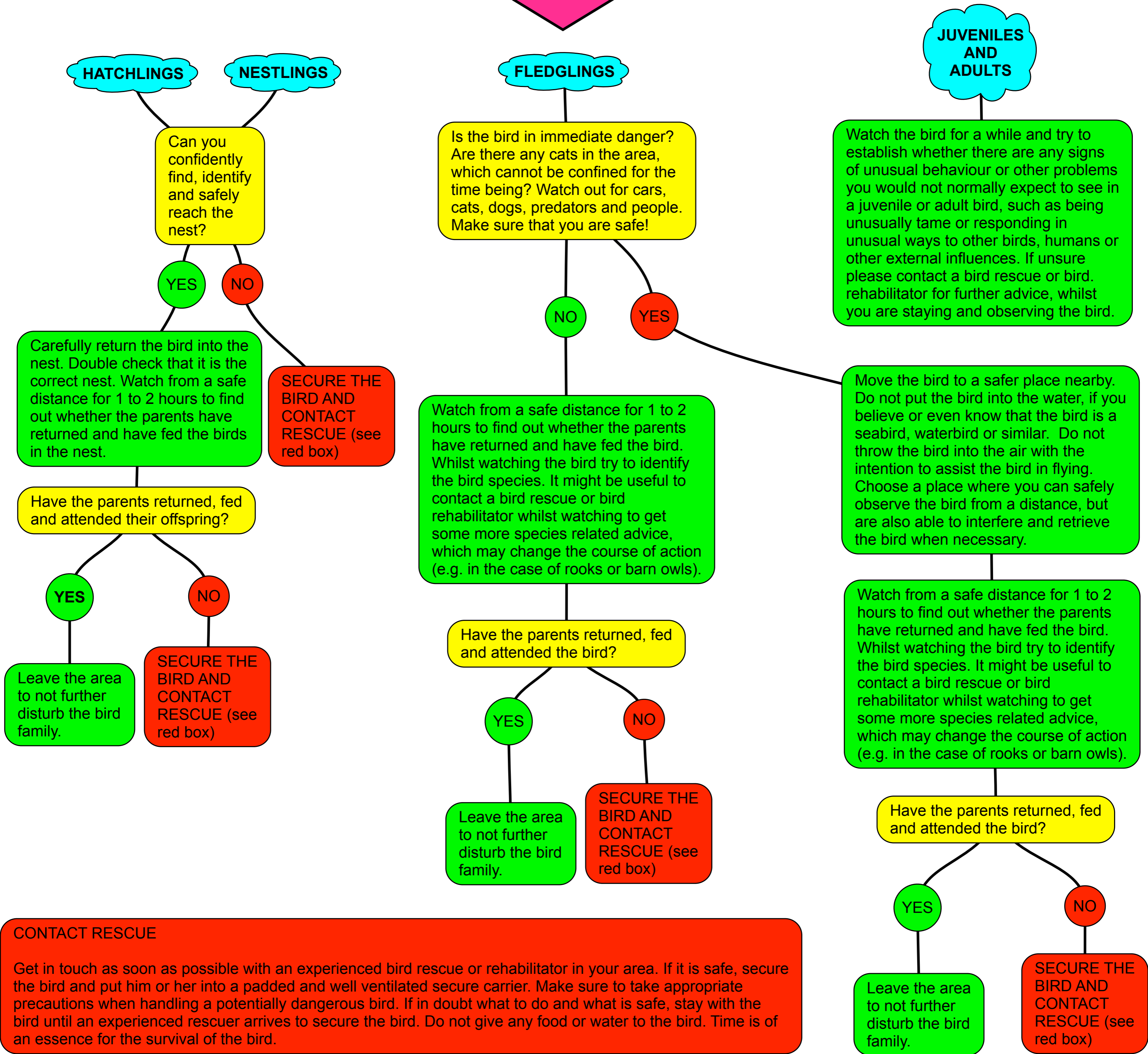


FLOW CHART NO 2



CONTACT RESCUE

Get in touch as soon as possible with an experienced bird rescue or rehabilitator in your area. If it is safe, secure the bird and put him or her into a padded and well ventilated secure carrier. Make sure to take appropriate precautions when handling a potentially dangerous bird. If in doubt what to do and what is safe, stay with the bird until an experienced rescuer arrives to secure the bird. Do not give any food or water to the bird. Time is of an essence for the survival of the bird.